



# WIX

wix primary school

école de wix



## Securing the future

delivering UK sustainable development strategy

# Sustainable schools

## For pupils, communities and the environment



# Quite interesting...

## Educational standards in England are improving, but:

We are the **least** energy efficient nation in Europe [EST]

UK carbon emissions are **rising**, and schools play a part [Defra]

We recycle just over a **fifth** of our waste, one of the lowest rates in Europe [Defra]

We have the **highest** levels of obesity in Europe [DoH]

**40%** of children don't understand the relationship between a potato and a chip

The average UK citizen makes **625** trips by car each year and only **15** by bike [DfT]



# What is a Sustainable School?

- A Sustainable School prepares young people for a lifetime of sustainable living, through its teaching, fabric and its day-to-day practices.

It is guided by a commitment to care:

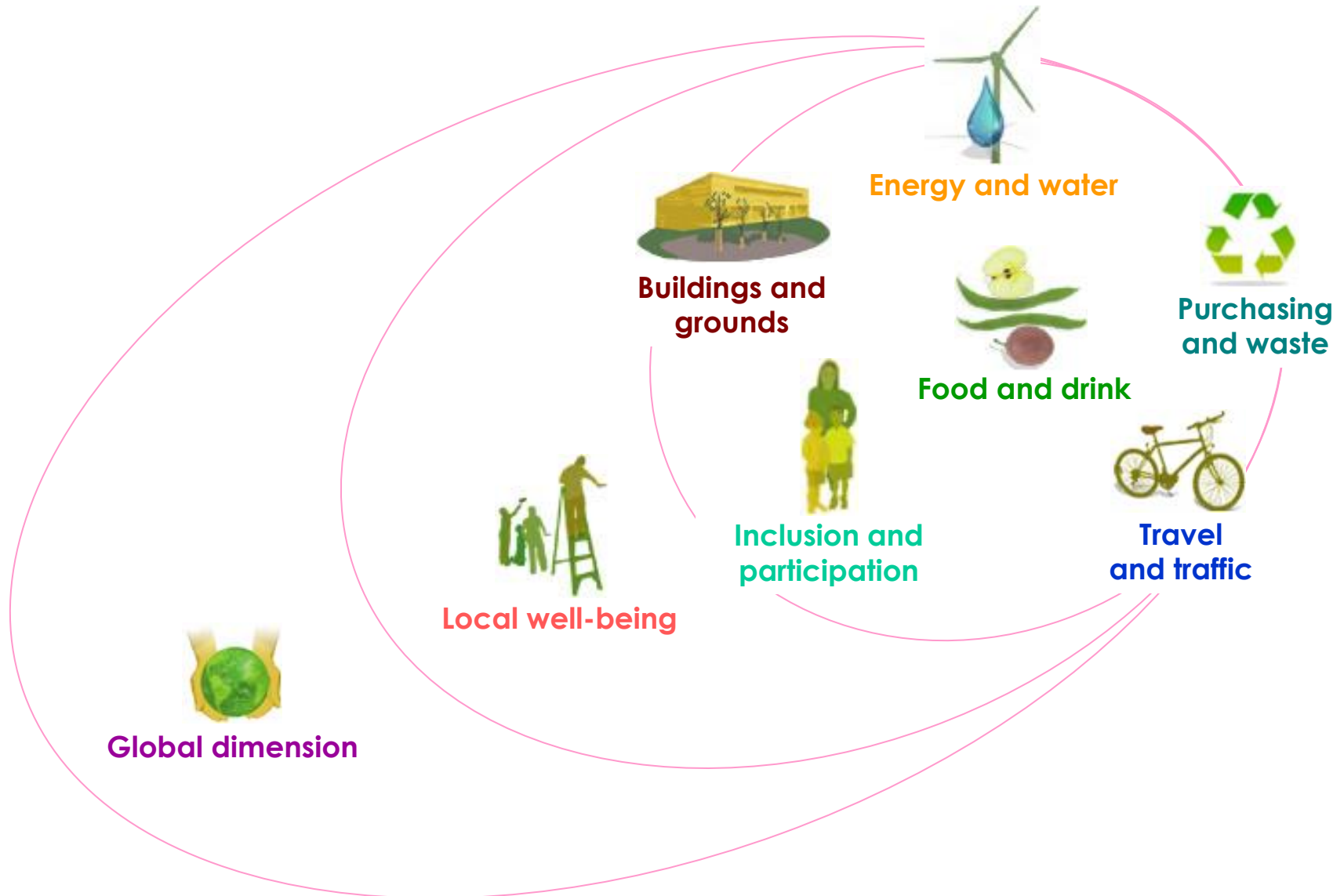
- care for **oneself** (our Health & well-being)
- care for **each other** (across cultures, distances & generations)
- care for **the environment** (both locally and globally)

- A Sustainable School puts a high value on the well-being of its pupils and the school environment.

- It is also a great place to learn, where pupils develop self-esteem and reach high standards of achievement.




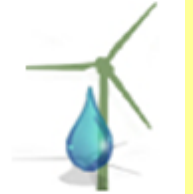

# Areas of action or 'doorways'






# National Framework on sustainability

## Doorways 1 to 3

**The DfES National Framework for Sustainable Schools identifies eight 'doorways' through which schools may choose to initiate or extend their sustainable school activity.**

<p>1. Improving Food and drink</p> 	<p>An unhealthy diet contributes to obesity and poor pupil concentration. Healthy, ethically sourced food can offer nutritional benefits while protecting the environment and supporting local producers and suppliers.</p> <p><i>All schools should be model suppliers of healthy, local and sustainable food and drink, showing strong commitments to the environment, social responsibility and animal welfare in their food and drink provision, and maximizing their use of local suppliers.</i></p>
<p>2. Conserving Energy and water</p> 	<p>Rising demand for energy and water is storing up problems for future generations. Energy and water conservation can tackle this while saving schools money.</p> <p><i>All schools should be models of energy efficiency, renewable energy use and water conservation, showcasing efforts such as wind and solar energy, and rainwater harvesting, to pupils and the whole community.</i></p>
<p>3. Addressing Travel and traffic</p> 	<p>Rising vehicle use adds to congestion, road accidents and pollution, including carbon emissions. Car-sharing and public transport help to ease these concerns, while walking and cycling also boost fitness and well-being.</p> <p><i>All schools should be models of sustainable travel, where vehicles are used only when absolutely necessary and where there are exemplary facilities for healthier, less polluting or less dangerous modes of transport.</i></p>

## Doorways 4 to 6

<p>4. Redefining Purchasing and waste</p> 	<p>Waste, and the throwaway culture that encourages it, can be addressed through sustainable consumption. Schools can reduce costs and support markets for ethical goods and services at the same time.</p> <p><i>All schools should be models of sustainable procurement, using goods and services of high environmental and ethical standards from local sources where practicable, and increasing value for money by reusing, repairing and recycling as many goods as possible.</i></p>
<p>5. Developing Buildings and grounds</p> 	<p>The design and management of the school estate affects its environmental performance, and its ability to help pupils learn sustainable living. A well-designed and cared-for school estate provides a rich resource for learning and play – not only about the environment but more widely, benefiting pupils' well-being and behaviour.</p> <p><i>All school buildings – old and new – should make visible use of sustainable design features and choose green building technologies and equipment as opportunities arise. Through their grounds, all schools should enable pupils to learn about the natural world and sustainable living.</i></p>
<p>6. Promoting Inclusion and participation</p> 	<p>Schools can promote a sense of community cohesion by providing an inclusive, welcoming atmosphere that values everyone's participation and contributions. They can challenge prejudice and injustice in all its forms.</p> <p><i>All schools should be models of social inclusion, enabling all pupils to participate fully in school life while instilling a long-lasting respect for human rights, freedoms, cultures and creative expression.</i></p>

## Doorways 7 to 8

### 7. Advancing Local well-being



With their central locations, facilities and extensive networks, schools can act as hubs of learning and change in their communities. Problems on the doorstep offer relevant and engaging opportunities for pupils to learn, and a means of strengthening local relationships.

*All schools should be models of good corporate citizenship within their local areas, enriching their educational mission with activities that improve the environment and quality of life of local people.*

### 8. Enhancing The Global Dimension



Growing interdependence between countries changes the way we view the world, including our own culture. Schools can respond by developing a responsible, international outlook among their pupils, based upon an appreciation of the impact of their personal values and behaviours on global challenges.

*All schools should be models of good global citizenship, enriching their educational mission with activities that improve the lives of people living in other parts of the world.*

# The DfES National Framework<sup>2</sup> for Sustainable Schools identifies eight 'doorways'

Doorway	By 2020 we recommend that . . .
Food and drink	all schools are model suppliers of healthy, local and sustainable food and drink
Energy and water	all schools are models of energy efficiency, renewable energy use and water management
Travel and traffic	all schools are models of sustainable travel
Purchasing and waste	all schools are models of waste minimisation and sustainable procurement
Buildings and grounds	all school buildings make visible use of sustainable design features and develop their grounds in ways that help pupils learn about the natural world and sustainable living
Inclusion and participation	all schools are models of social inclusion, enabling all pupils to participate fully in school life
Local well-being	all schools are models of good corporate citizenship within their local areas
Global dimension	all schools are models of good global citizenship



# Linking Initiatives

**How do we link all the different DCfS initiatives and have a coherent basis for developing cross-curricular work?**

***By becoming a sustainable school.***

This is in line with government policy which wants every school to be a sustainable school by 2020.

# The notion of Care in sustainability brings together all our initiatives

The concept of Care is explored in differing and increasingly wider contexts:

- care for **oneself (our Health & well-being)**
- care for **each other (across cultures, distances & generations)**
- care for **the environment (both locally and globally)**

The integrating nature of this over-arching theme can be shown by drawing lines on the following slide (and handout), to link the major government initiatives

- *Every child matters,*
- *Healthy schools,*
- *Rights respecting,*
- *ISA International schools award*
- *Eco-schools*

**With the eight doorways.**



A Sustainable School is guided by a commitment to care for:

- oneself (our Health & well-being)
- each other (across cultures, distances & generations)
- the environment (both locally and globally)



**Every Child Matters**

- be healthy (physical and mental health and emotional well-being)
- stay safe (protection from harm and neglect)
- enjoy and achieve (education, training and recreation)
- make a positive contribution (the contribution made by them to society)
- achieve economic well-being (social and economic well-being).



"The International School Award helps schools establish creative and effective international partnerships"



Core themes  
**PSHE**, **healthy eating**,  
**physical activity** and  
**emotional wellbeing**.



The Rights Respecting award promotes the United Nations Convention on the Rights of the Child as the basis for enhancing teaching, learning, ethos, attitudes and behaviour



# ISA Global link projects that develop an international outlook through project work

## **With partner school:**

- Jointly devised logo/mascot;
- Illustrate jointly produced books
- Collaborative stories/CDs/DVDs/videos
- Interactive closed websites/blogs/chat rooms
- Ideal school/town/playground/joint murals
- Joint recipe books
- Drama/role plays/puppets/ animations
- Junior reporters/"newswatch"
- Video dictionaries/ phrase books
- European magazines/newspapers
- Euro quiz/ internet shopping (e.g. Tesco's, Leclerc..)
- Board games/ jigsaws
- Comparing what is eaten/ worn during festivals
- Sending maps and pictures of local areas
- Comparing how children go to school
- Comparing leisure activities/ school topics in history, geography
- Multilingual calendars/ video dairies
- Interactive weather /environmental reports on local areas /growth and seasonal comparisons.
- Sharing reports on school visits
- Writing tourist guides or doing PowerPoint's on town/village pupils live in
- Shared playground games/dances/sports/traditions/festivals/dances/ lessons (video/DVD).
- "Euro vision song contest/ choir/ videos songs in common
- Songs/ nursery rhymes/ fairy tales// modern classics- finding songs common to different countries
- Games such as picture this describing something and others draw it/ guess what it is /see who is the closest
- Questionnaires of views about school topical issues/ likes and dislikes ...



**FRAGILE**  
**HANDLE WITH CARE**